

Bibliography

Chapter 1: What is Real-Time Processing?

Halang, W. A. and A. D. Stoyenko, *Constructing predictable real-time systems*, Kluwer Academic Publishers, Boston, 1991.

Laplante, P., *Real-Time Systems Design and Analysis: An Engineer's Handbook*, IEEE Press, Piscataway, NJ, 1992.

van Tilborg, A. and G.M. Koob, editors, *Foundations of Real-Time Computing*, vols. I, II, Kluwer Academic Publishers, Boston, 1991.

Chapter 2: Basic Hardware Architecture

Bartee, T. C., *Computer architecture and logic design*. New York: McGraw-Hill, 1991.

Dougherty, E. R., and C. R. Giardina, *Mathematical Methods for Artificial Intelligence and Autonomous Systems*, Prentice-Hall, Englewood Cliffs, 1988.

Hayes, J. P., *Computer architecture and organization*. 2nd ed. New York: McGraw-Hill, 1988, pp. 210-211.

Hill, F. J. and G. R. Peterson. *Digital systems: Hardware organization and design*, 3rd ed., New York, John Wiley & Sons, 1987.

Chapter 3: Linear Image Processing Algorithms

Dougherty, E. R., and C. R. Giardina, *Image Processing - Continuous to Discrete*, Prentice-Hall, Englewood Cliffs, 1987.

Gonzalez, R. C., and R. E. Woods, *Digital Image Processing*, Addison-Wesley, Boston, 1992.

- Haralick, R. and L. Shapiro, *Machine Vision*, Addison-Wesley, Boston, 1991.
- Jain, A. K., *Fundamentals of Digital Image Processing*, Prentice-Hall, Englewood Cliffs, 1989.
- Lim, J. S., *Two-Dimensional Signal and Image Processing*, Prentice-Hall, Englewood Cliffs, 1990.
- Pratt, W. K., *Digital Image Processing*, 2nd ed., John Wiley, New York, 1991.
- Rosenfeld, A., and A. C. Kak, *Digital Picture Processing*, Academic Press, New York, 1992.

Chapter 4: Compression by Matrix Transforms

- Brigham, E. O., *The Fast Fourier Transform and its Applications*, Prentice-Hall, Englewood Cliffs, 1988.
- Clarke, R. J., *Transform Coding of Images*, Academic Press, New York, 1985.
- Jones, P. W., and M. Rabbani, "Digital Image Compression," in *Digital Image Processing Methods*, ed. E. R. Dougherty, Marcel Dekker, New York, 1994.
- Hsing, T. R., and A. G. Tescher, eds., *Selected papers on Visual Communication Technology and Applications*, SPIE Milestone Series, Vol. MS 13, SPIE Press, Bellingham, 1990.
- Netravali, A. N., and B. G. Haskell, *Digital Pictures: Representation and Compression*, Plenum Press, New York, 1988.
- Pennebaker, W. B., and J. L. Mitchell, *JPEG: Still Image Data Compression Standard*, Van Nostrand Reinhold, New York, 1992.
- Rabbani, M., ed., *Selected Papers on Image Compression*, SPIE Milestone Series, Vol. MS 48, SPIE Press, Bellingham, 1992.
- Rabbani, M., and P. W. Jones, *Digital Image Compression Techniques*, SPIE Press, Bellingham, 1991.
- Rao, K. R., and P. Yip, *Discrete Cosine Transform: Algorithms, Advantages, Applications*, Academic Press, San Diego, 1990.

Chapter 5: Nonlinear Image Processing Algorithms

- Astola, J., and E. R. Dougherty, "Nonlinear Filters," in *Digital Image Processing Methods*, ed. E. R. Dougherty, Marcel Dekker, 1994.
- Dougherty, E. R., *An Introduction to Morphological Image Processing*, SPIE Press, Bellingham, 1992.
- Dougherty, E. R., ed., *Mathematical Morphology in Image Processing*, Marcel Dekker, New York, 1992.
- Dougherty, E. R., and J. Astola, *An Introduction to Nonlinear Image Processing*, SPIE Press, Bellingham, 1994.
- Giardina, C. R., and E. R. Dougherty, *Morphological Methods in Image and Signal Processing*, Prentice-Hall, Englewood Cliffs, 1988.
- Pitas, I., and A. Venetsanopoulos, *Nonlinear Digital Filters*, Kluwer Academic Publishers,
- Serra, J., *Image Analysis and Mathematical Morphology*, Academic Press, New York, 1982
- Serra, J., ed., *Image Analysis and Mathematical Morphology*, Vol. 2, Academic Press, New York, 1988.

Chapter 6: Parallel Architectures

- Duff, M. J. B., ed., *Computing Structures for Image Processing*, Academic Press, London, 1983.
- Lawson, H. W., *Parallel Processing in Industrial Real-Time Applications*, Prentice-Hall, Englewood Cliffs, NJ, 1992.
- Levialdi, S., ed., *Multicomputer Vision*, Academic Press, London, 1988.
- Uhr, L., Preston, Jr., K., Levialdi, S., and M. J. B. Duff, eds., *Evaluation of Multicomputers for Image Processing*, Academic Press, New York, 1986.
- Wilson, S. S., "Image-Processing Architectures," in *Digital Image Processing Methods*, ed. E. R. Dougherty, Marcel Dekker, New York, 1994.

Chapter 7: Programming Languages

Burns, A. and A. Wellings. *Real-time systems and their programming languages*. New York: Addison Wesley, 1990.

Horowitz, E., *Fundamentals of programming languages*. 2nd ed. Rockville, MD: Computer Science Press, 1984.

Laplante, P., *Real-Time Systems Design and Analysis: An Engineer's Handbook*, IEEE Press, Piscataway, NJ, 1992.

Chapter 8: Optimization Techniques

Aho, A., Sethi R., and J. Ullman. *Compilers: Principles, techniques and tools*. New York: Addison Wesley, 1986.

Jain, R., *The Art of Computer Systems Performance Analysis*, John Wiley, New York, 1991.

Laplante, P., *Real-Time Systems Design and Analysis: An Engineer's Handbook*, IEEE Press, Piscataway, NJ, 1992.

Index

- Abstract data type, 145
- Activity packet, 26, 28
- Ada, 151
- Addressing modes, 15–17
- Approximate reasoning, 168–169
- Arithmetic identities, 158–159
- Arithmetic logic units (ALUs), 81
- Assembly language (code), 12, 151–153
- Associative memory, 137–140
- Asynchronous event, 2
- Attributes, 148

- Basic, 150
- Basis, 86
- Binary filters, 87–100
- Binary window filters, 82
- Boolean functions, 82–86
- Bus, 12

- C, 150–151
- Cache, 22
- Cache hit ratio, 22
- Call-by-reference (address)\
 parameter passing, 142
- Call-by-value parameter passing, 142
- Canonical pairs, 96
- Center weighted median filters, 103
- Central processing unit. *See* CPU
- CISC (complex instruction set
 computers), 21–22
- Class definitions, 148
- Clutter, 88
- CMOS, 18–19
- Common subexpression elimination,
 160–161
- Compass gradient, 48, 51
- Compass mask, 48, 51
- Compression, 8, 9, 59–80
- Compute-bound computations, 25
- Computer architecture classification,
 12, 19–21
- Constant folding, 159–160
- Content-addressable memory. *See*
 Associative memory
- Convolution algorithm, 52–58
- Convolution pipeline, 120
- Convolution, 29–31, 129–131
- Coprocessors, 18
- CPU, 11, 20–21
- CPU utilization, 5, 6, 155–156

- Dataflow architectures, 26–28, 121,
 122
- Decoding, 13
- Decompression. *See* Compression
- Deterministic systems, 3
- Digital image, 29
- Digital signal convolution, 56
- Dilation, 86, 131
- Direct addressing mode, 15–16
- Direct memory access (DMA), 18
- Discrete convolution, 31
- Discrete cosine transform, 72–79
- Discrete Fourier transform, 67–73
- Disjunctive normal form, 83
- Dithering, 8
- Double indirect addressing mode, 17
- Dynamic memory allocation, 144
- Dynamic priority systems, 4

- Edge filters, 45
- EEPROM, 19
- Embedded systems, 2
- Enabled state, 26
- Encapsulation, 148
- Erosion, 84–86, 131
- Event, 2
- Event determinism, 3
- Exception handling, 145–146
- Execute, 13
- Execution time, 156–157

- Fast Fourier transform, 67–72
- Fast Hadamard transform, 66
- Fetching, 12
- Firm real-time systems, 2
- Fixed priority systems, 4
- Fixed rate systems, 3
- Flat dilation, 109
- Flat erosion, 109
- Flat morphological filters, 100
- Floating-point number, 81
- Fortran, 149

- Global variables, 143
- Gradient edge detection, 45–50
- Granulometric filters, 111–117
- Granulometric size distribution, 114
- Granulometry, 114
- Gray-scale moving median filters, 100–103
- Hadamard transform, 60–67
- Hard real-time systems, 2
- Hit-or-miss transform, 96–102
- Hybrid systems, 5
- Hypercube processors, 137
- Immediate addressing mode, 15
- Implied addressing mode, 15
- Imprecise computation, 168–169
- Increasing binary filters, 87–97
- Increasing (positive) Boolean function, 83–97
- Indirect addressing mode, 15–16
- Information hiding, 148
- Inheritance, 148
- Input/output (I/O), 18
- Input/output processors, 20
- Instruction modes. *See* Addressing modes
- Interrupt, 13–14
- Interrupt controller, 15
- Interrupt latency, 2
- Interrupt register, 13
- Interrupt vector, 13
- JPEG (Joint Photographic Expert Group), 74, 78
- Karnaugh-map reduction, 83
- Linear array (vector) processors, 133–136
- Linear edge detection, 45–50
- Linear granulometries, 114
- Linear image processing, 29–58
- Linear matched filtering, 48–54
- Linear noise suppression, 31–44
- Locality-of-reference, 22
- Logic analyzer, 156
- Look-up tables, 167–168
- Loop invariant elimination, 162
- Loop invariant removal, 161
- Loop jamming, 163–164
- Loop unrolling, 162–163
- Lossless compression, 59
- Lossy compression, 59
- Macroinstructions, 12
- Mask register, 13, 138
- Matched filtering, 48–54, 98–103
- Matrix multiplication, 121–133
- Matrix transforms, 59–80
- McCalla minterm-ring algorithm, 83
- Median filters, 100–110
- Memory caching, 22
- Memory optimization, 169–170
- Memory storage, 56
- Memory-mapped I/O, 18
- Mesh processors, 137
- Microcontroller, 22
- Microinstructions, 12
- Microprogram, 12
- MIMD (multiple instruction, multiple data stream) processors, 25–28
- Minimal representation, 84
- Minimum, 138, 140
- Minterm, 83
- MISD (multiple instruction, single data) computers, 23–25
- Morphological gradient, 110–113
- Morphological pattern spectrum, 114
- Moving median, 88
- Moving minimum, 109
- Moving-average restoration, 31, 33–44
- MPEG (Motion Picture Engineers' Expert Group), 77
- Multimedia computing, 7
- Multiprocessing, 4, 20
- Multitasking, 4
- NMOS, 19
- Noise suppression, 100–103
- Nonincreasing binary filters, 97–103
- Nonlinear edge detection, 110–113
- Nonlinear image processing, 81–117
- Nonlinear noise suppression, 87–98
- Object-oriented programming languages, 148–149
- Opening, 87–90
- Optimization, 155–170
- Parallel architectures, 119–140
- Parallel CPU systems, 20
- Parallel thinning, 97, 99
- Parameter passing, 142–143

- Parnas partitioning, 146–147
- Partitioning, 146–147
- Pascal, 150
- Pipeline flushing, 24
- Pipelining, 23–24, 119–121
- Preemptive priority systems, 4
- Prewitt gradient masks, 45–46
- Programmed I/O, 18
- PROM, 19
- Pruners, 97–98

- Quadtree compression, 77, 80
- Quine-McCluskey method, 83

- RAM, 18
- Rate-monotonic systems, 5
- Reactive real-time systems, 2
- Ready state, 26
- Real-time processing, 1–9
- Real-time systems, definition of, 1
- Recursion, 143–144
- Reduction in strength, 160
- Register direct addressing modes, 17
- Register indirect addressing mode, 17
- Response store, 138
- Response time, 1
- RISC architectures, 21
- Roberts gradient, 121, 122
- ROM, 18–19
- Round-robin systems, 4

- Scaled numbers, 165–167
- Secondary storage devices, 11
- Segment, 23
- Sequency coefficients, 65
- SIMD (single instruction, multiple data stream) processors, 25, 133–137
- SISD (single instruction stream, single data stream) computer architecture, 19–23

- Smoothing, 31–32
- Sobel masks, 46
- Soft real-time systems, 2
- Sporadic systems, 3
- Stack filters, 100, 104, 110
- Stage, 23
- Starvation, 4
- Status register, 13
- Strong-neighbor mask, 91
- Structuring element, 84, 100
- Synchronous event, 2
- Systolic array processors, 121–131

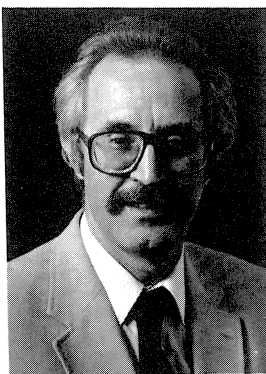
- Templates, 26
- Temporal determinism, 3
- Text restoration, 87–95, 99
- Threshold decomposition, 103–110
- Threshold method, 63, 65
- Time-loading, 5
- Time-overloading, 5
- Tokens, 26–27
- Transform coding, 59–60
- Transputers, 28
- Typing, 144–145

- UVPROM, 19

- Video dithering, 8
- Virtual reality, 9
- von Neumann architectures, 11–19
- von Neumann bottleneck, 13, 21, 23

- Waiting state, 26
- Wavefront array processors, 25, 132–133
- Weighted median filters, 103
- Window logic, 81
- Windowed convolution, 30, 48

- Zonal method, 63



Edward R. Dougherty is a professor at the Center for Imaging Science of the Rochester Institute of Technology and also serves as an industrial consultant. He holds an M.S. in computer science from Stevens Institute of Technology and a Ph.D. in mathematics from Rutgers University. He has written numerous professional papers on image processing and has authored/co-authored eight books, including the present *SPIE* tutorial text and two other *SPIE* tutorial texts, *An Introduction to Nonlinear Image Processing* (with Jaakko Astola) and *An Introduction to Morphological Image Processing*. He has also edited two books in the Marcel Dekker Optical Engineering Series: *Mathematical Morphology in Image Processing* and *Digital Image Processing Methods*. He is currently the editor of the *SPIE/IS&T Journal of Electronic Imaging*, serves as associate editor for the journals of *Mathematical Imaging and Vision* and *Real-Time Imaging*, serves as chair of the SPIE Working Group on Electronic Imaging, serves as chair for two SPIE conferences, *Image Algebra and Morphological Image Processing* and *Nonlinear Image Processing*, and regularly teaches conference short courses in morphological, nonlinear, and real-time imaging.



Phillip A. Laplante (Senior Member, IEEE) received a B.S. degree, an M.Eng., and a Ph.D. in Computer Science, Electrical Engineering, and Computer Science, respectively, from the Stevens Institute of Technology. He is currently an Associate Professor and Chair in the Department of Mathematics and Computer Science at Fairleigh Dickinson University (Madison, New Jersey) and a visiting researcher at the Real-Time Systems Laboratory at New Jersey Institute of Technology. Dr. Laplante's interests are in image processing, real-time systems, and real-time image processing, including virtual reality. He has authored over three dozen technical papers and six books. He is the founding co-editor-in-chief of the new journal, *Real-Time Imaging*. Dr. Laplante is a licensed Professional Engineer in the State of New Jersey, a member of ACM, SPIE, and the IEEE Press Editorial Board.